



# multifunctional Farming for the sustainability of European Agricultural Landscapes

Project N°: 2016-1-SK01-KA202-022502

## FEAL CATALOGUE

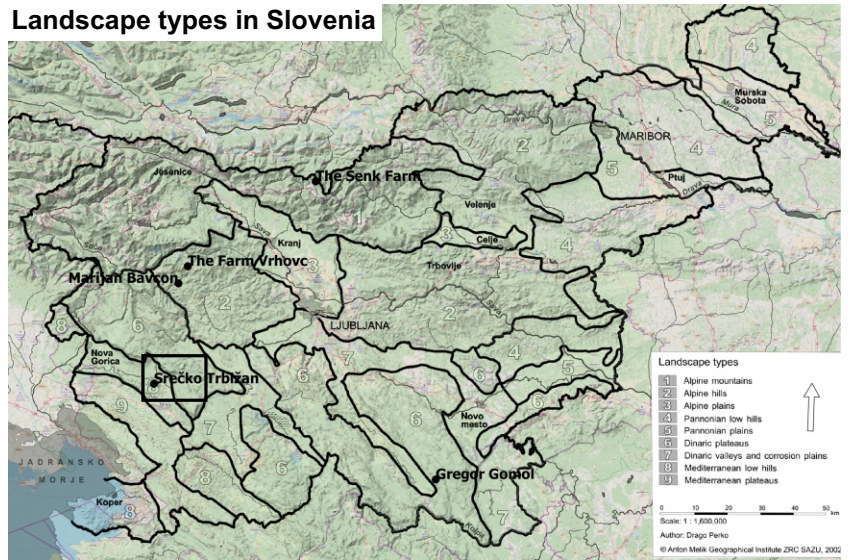
The consolidation of national typologies with European agricultural landscapes

Slovenia

The Vipava Valley

Srečko Trbižan

Landscape types in Slovenia

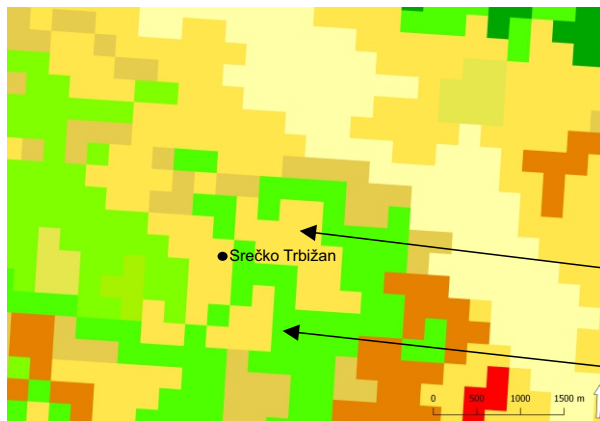


Base map: <https://wiki.openstreetmap.org/wiki/Tileserv>

### European agricultural landscapes

E-atlas

### Vineyards



**National landscape type:**  
 Mediterranean low hills; Vineyard region of Vipava valley

- Land cover CLC 2012:**
- Heterogeneous agricultural areas, complex cultivation patterns;
  - Forest and semi natural areas, mix forests

### Landscape character and the natural, cultural, and historical heritage



Funded by the Erasmus+ Programme of the European Union



This project has been funded with support from the European Commission. This publication reflects the views only of the author, and the Commission cannot be held responsible for any use which may be made of the information contained therein.

# Mediterranean low hills

## The alluvial plains

Alluvial soil is fine-grained fertile soil therefore they are mostly used for farming.



Natural protected and ecologically important areas



Environmental atlas of Slovenia

[http://gis.arso.gov.si/atlasokolja/profile.aspx?culture=en-US&id=Atlas\\_Okolja\\_AXL@ARSO](http://gis.arso.gov.si/atlasokolja/profile.aspx?culture=en-US&id=Atlas_Okolja_AXL@ARSO)





*The vineyards are planted at nine different locations which begin at the foot of the hills and reach up to 400 m above sea level.*



*The Vipava valley near Ajdovščina. Trnovski Gozd Mts. in the background.*